

PROJECT BRIEF

Camp Bullis Sentinel Landscape Partnership

Project Overview

The **Camp Bullis Sentinel Landscape Partnership** (CBSL) is a locally led, non-regulatory collaborative committed to mission sustainment at Joint Base San Antonio–Camp Bullis (JBSA). Our work is based on the understanding that what happens outside of a military installation can impact military readiness on-base. Hence, we work with volunteering private landowners and communities around Camp Bullis to support local needs that are compatible with mission training. These needs vary. We secure and leverage technical and financial resources to support natural resources conservation, bolster agricultural productivity, protect night skies, and enhance resilience to drought, flooding, and wildfire in the area.

Guiding Principles

We value trust and relationships

We are self-organized and self-governed

We value diverse perspectives and knowledge

We invest in adaptation

We support compatible development

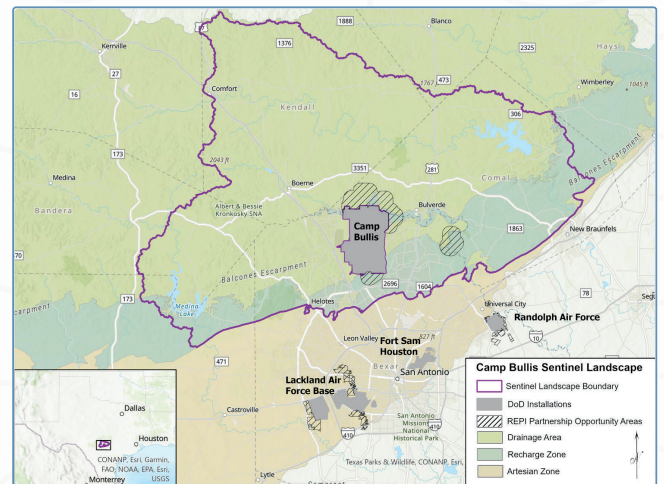
We believe in the power of collaboration

We are locally led and non-regulatory

Partnership Priorities

To enhance the military training capabilities and sustain the mission of JBSA–Camp Bullis, CBSL partners will work with volunteering landowners and local communities to implement projects primarily focused on:

- ✓ compatible land conservation and development
- ✓ habitat preservation and enhancement
- ✓ night-sky preservation
- ✓ soil health and groundwater infiltration
- ✓ flood, drought, and wildfire resilience



The CBSL encompasses 949,744 acres of the Texas Hill Country; this multi-county area is delineated in purple, following hydrological units.

Contact Information

Daniel Oppenheimer
Land Program Director &
Camp Bullis Sentinel Landscape Coordinator

✉ Daniel@hillcountryalliance.org

☎ (210) 287-0478

tx.ag/campbullisSL

GOALS & PROJECT AREA

- 1 Reduce and Mitigate Encroachment by Supporting Compatible Land Uses
- 2 Enhance and Sustain Military Installation and Community Resilience Through Natural Resource Stewardship
- 3 Create and support a thoughtful, effective Sentinel Landscape Partnership through adaptive management

JBSA–Camp Bullis is located in Bexar County, at the southern edge of the Texas Hill Country. The 27,978 acre military installation sits atop karst, limestone aquifers, and is surrounded by a variety of land uses (e.g. working lands, local parks, as well as urban, suburban, exurban and rural communities).

The Texas Hill Country is a diverse mosaic of woodland, forest, savanna, grassland, and shrubland. It provides habitat to numerous endemic species and is also the source of numerous major rivers, which are intricately connected to underground aquifers. The Texas Hill Country is experiencing rapid population growth emanating from San Antonio, Austin, and out-of-state.

Within this landscape, Camp Bullis provides training opportunities and support for all Department of Defense medical training, in addition to supporting military intelligence, Special Forces, pre-deployment, and national and international training requirements. In addition to supporting key mission capabilities, JBSA contributes \$55 billion annually to the Texas economy and contributes 240,403 direct and indirect jobs to our region. Preserving JBSA–Camp Bullis as a premier military training ground is essential to supporting this economic driver. As “Military City USA,” San Antonio and the surrounding region have a unique, ingrained relationship with the military that has contributed to keeping our regional economy and our nation strong.

In 2021, CBSL partners spatially assessed various equities (e.g. surface and groundwater resources, military flight training routes, habitat of mission-sensitive species, existing conservation programs) around Camp Bullis to scope the multi-county project area. Based on this spatial assessment and the use of U.S. Geological Survey Hydrologic Unit Code 10 watershed boundaries, partners delineated a CBSL project area of 949,744 acres. Watershed boundaries present definitive ecological and topographical delineations that have a direct relationship to—and anchor—Camp Bullis to the surrounding Texas Hill Country.



Photo by Daniel Oppenheimer
Hill Country Alliance



JOINT BASE SAN ANTONIO-CAMP BULLIS
Photo by Sarayuth Pinthong
502nd Air Base Wing