

# August 21, 2017 Solar Eclipse Event

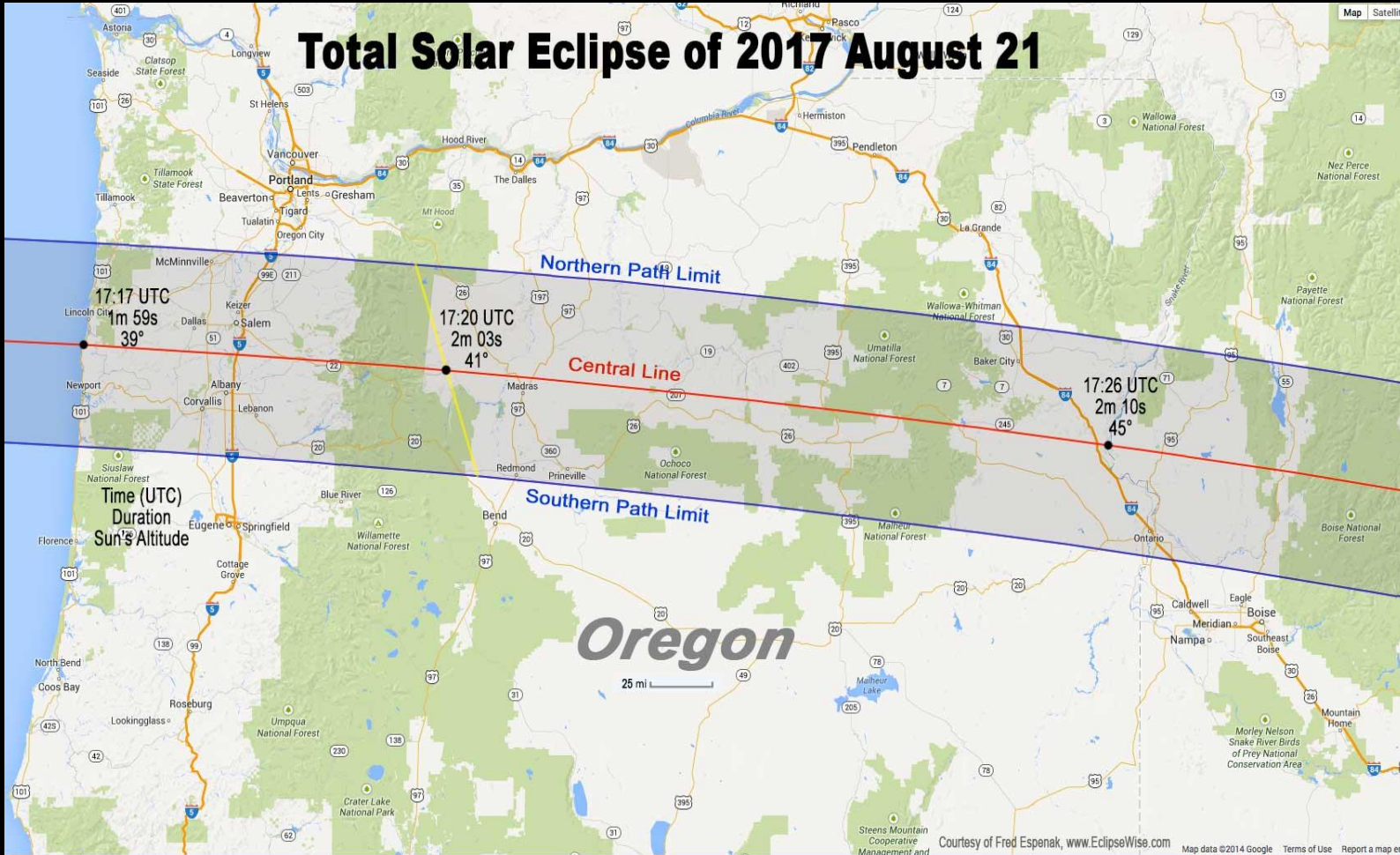
City of Salem  
Preparations



# The Great American Eclipse



# How many people are coming to Salem?



Estimates range from 100,000 to 550,000 people coming to or through Salem area

Weather forecasts:

- Coast Clouds
- Valley Clouds
- Day Trip Visitors

Forest Fires/Wildfires:

- Reduction in camping spots
- Smoke in Central Oregon

**We really don't know!**

# Solar Eclipse Event: Areas of Concern



- Traffic Congestion
- Fire & EMS Response
- Impacts to City Parks



- Utility Operations
- Communication
- Groceries – Fuel – ATMS



# Tri-Level Response Plan

- **Low Intensity Impact & Response (Yellow)**

- < 125,000 visitors to Salem
- Heavy traffic beginning Sunday overnight through Monday afternoon
- Moderate-sized crowds in parks, with few overnight stays in parks

- **Medium Intensity Impact & Response (Orange)**

- 125,000 to 250,000 visitors to Salem
- Heavy traffic beginning Sunday morning through Monday evening
- Large crowds in parks, with many overnight stays in parks

- **Heavy Intensity Impact & Response (Red)**

- > 250,000 visitors to Salem
- Heavy traffic Saturday beginning afternoon through Tuesday morning
- Maximum capacity crowds in parks, with very many overnight stays in parks

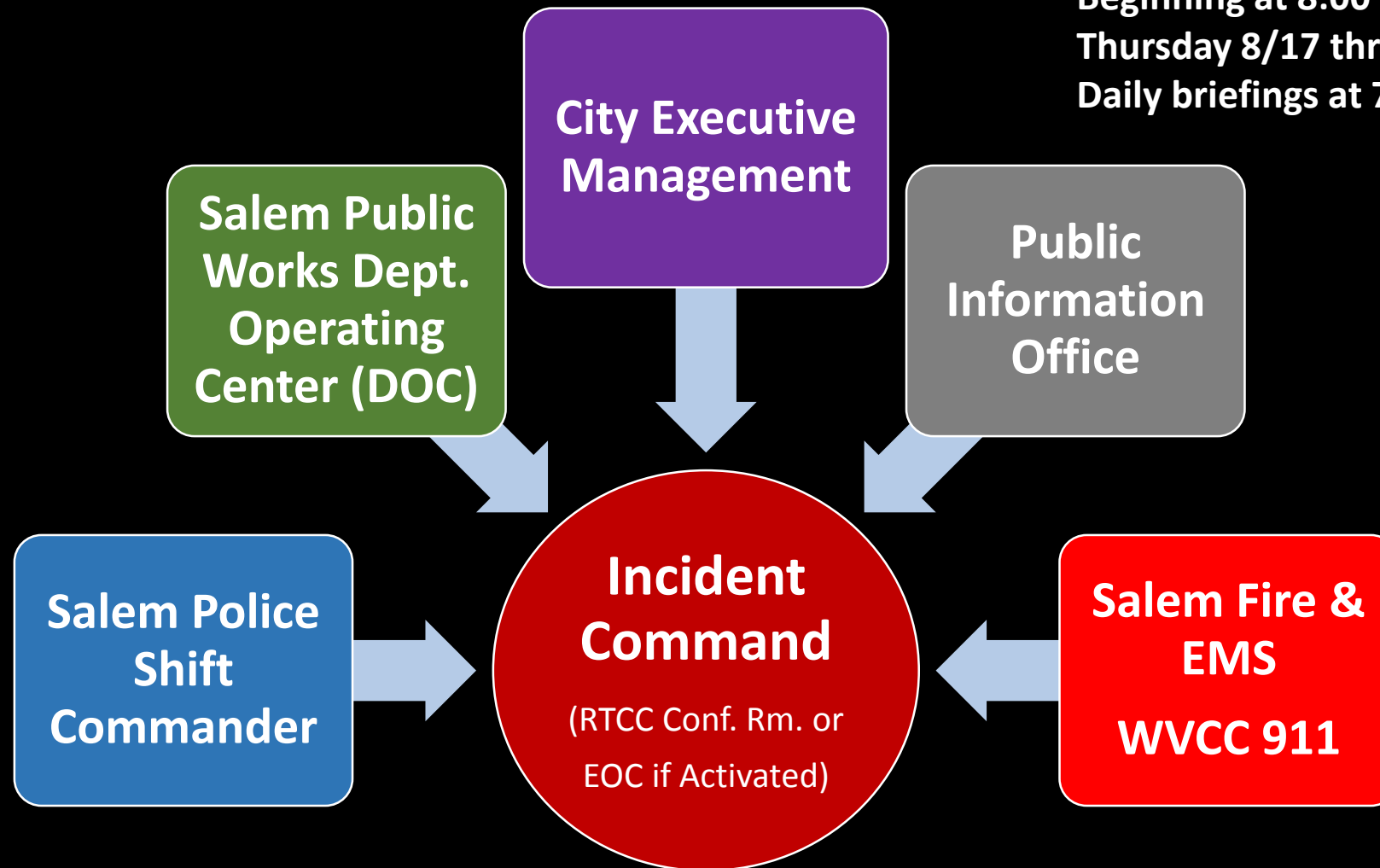
# Intra-City Command and Coordination

24 Hour Operational Periods:

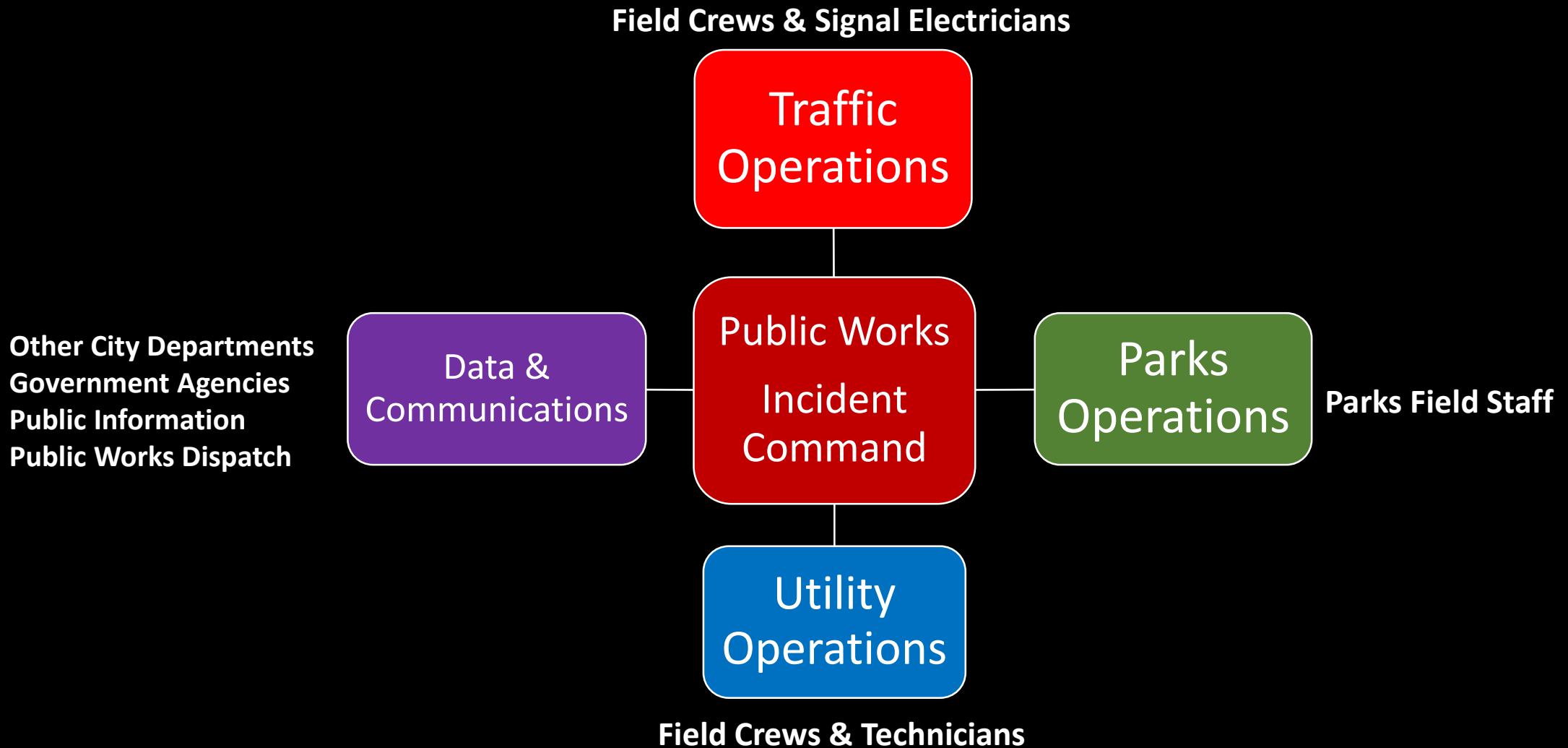
Beginning at 8:00 am

Thursday 8/17 through Tuesday 8/22

Daily briefings at 7:00 am and as needed

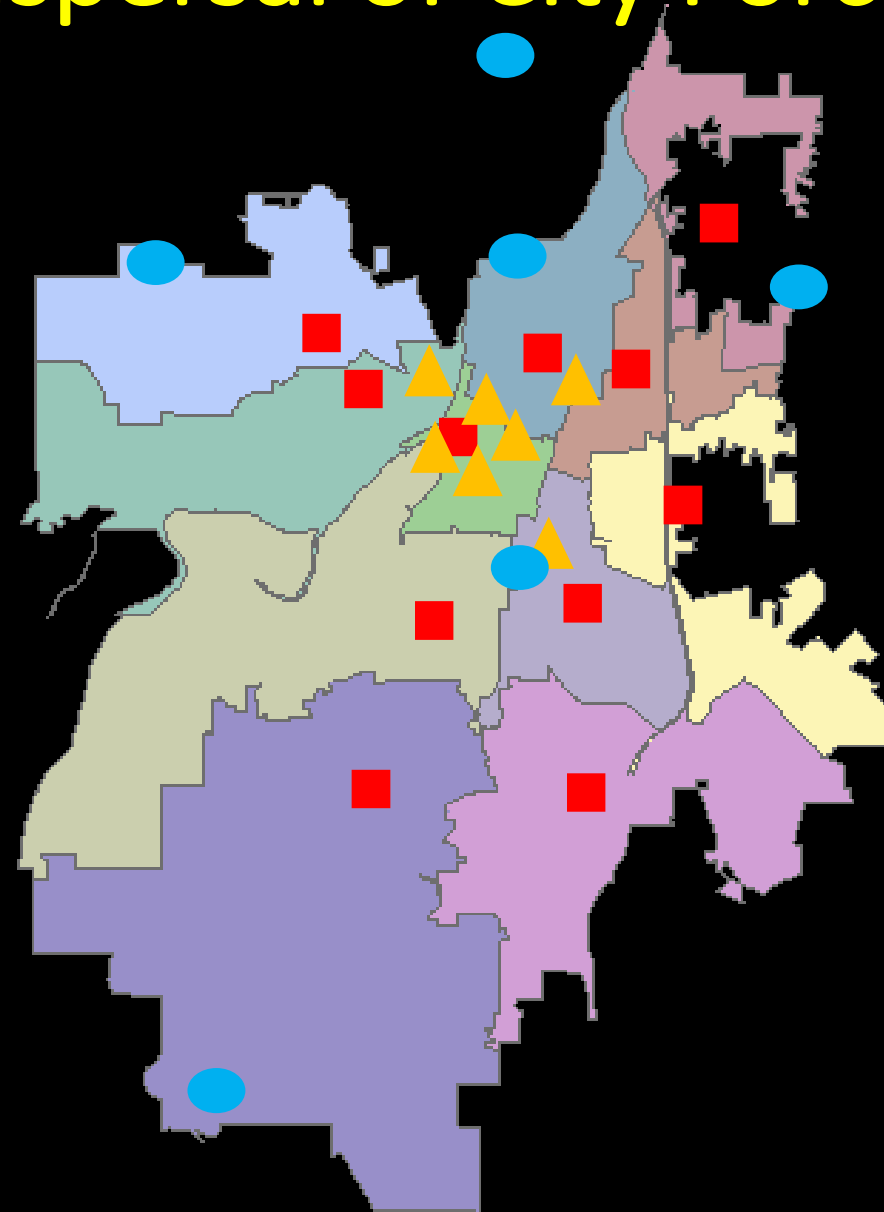


# Public Works Command Group: Department Operating Center (DOC) at City Shops



# Geographic Dispersal of City Forces

- Fire and EMS Resources
- Police Units
- Public Works
  - Traffic Control
  - Utilities
  - Parks





# Major Eclipse Viewing Parks

*Staffed Saturday 8/19 through Monday 8/21*

- **Riverfront Park**
- **Wallace Marine Park**
- **Minto-Brown Island Park**
- **Bush's Pasture Park**
- **River Road Park**
- **Geer Park**
- **Cascades Gateway Park**
- **Northgate Park**
- **Lansing (Eastgate Basin Park)**
- **Woodmansee Park**
- **McKay Park**
- **Battle Creek Property**
- **Bryan Johnston Park**

Remaining Neighborhood Parks and other properties to be checked on a route basis

# Spending the Night in City Parks...

*All parks rules apply except we are extending the parks hours of operation to include overnight  
Saturday 8/19 and Sunday 8/20*

## Allowed

- Small tents
- Small Pop-up canopies
- Sleeping bags & blankets
- Lawn chairs
- Coolers, duffel bags, etc.
- Dogs on leash

## Prohibited

- Vehicles on grass, including ATVs
- RVs, campers, tent trailers
- Large event tents
- Fire pits, fire rings
- Tailgating set-ups & field kitchens
- Alcohol, drugs, smoking, marijuana
- Dogs off-leash, except in dog parks

# Logistics...Supporting Visitors in Parks

*We could see as many as 75,000 people in our parks*

- **115 Additional portable chemical toilets**
- **16 Water bottle filling stations**
- **2,800 Temporary signs**
- **Medics assigned to selected parks**
- **Additional Police patrols**
- **Salem Fire Department Boat in Willamette River**
- **Command & Information tent staffed in each major park**
- **5 Additional 20-yard Garbage Dumpsters, plus 24/7 Garbage Truck Hauling**
- **Approx. 90 Parks Operations and Public Works Staff Assigned to Parks**



# Employing New Technologies



# What can the public do to prepare this week?

- Purchase a reasonable amount of groceries
- Obtain prescription medications if running low
- Fill fuel tank of at least one vehicle per household
- Get enough cash from bank or ATM for the weekend
- Create a 72 hour emergency kit – just like you would for a storm
- Try to reduce or avoid driving on Sunday 8/20 and Monday 8/21
- Obtain certified eclipse safety viewing glasses...enjoy the eclipse!

**Remember...it's just a long three-day weekend...**

**Prepare, but don't hoard!**

# For more information:

- **Websites**

[City of Salem.net/eclipse](http://CityofSalem.net/eclipse)

[SalemAreaEclipse.info](http://SalemAreaEclipse.info)

- **Capitol Community Television – Comcast Channel 21 (information crawler)**

- **Social Media**

City of Salem Facebook: [facebook.com/CityofSalemOR/](https://facebook.com/CityofSalemOR/)

City of Salem Twitter: [twitter.com/cityofsalem](https://twitter.com/cityofsalem)

Salem Police Facebook: [facebook.com/SalemPoliceDept/](https://facebook.com/SalemPoliceDept/)

Salem Police Twitter: [twitter.com/SalemPoliceDept](https://twitter.com/SalemPoliceDept)

Welcome  
to Selem

